



BACK PERSPECTIVE

THE MAPLE

THIS COMPACT YET CLASSICALLY PROPORTIONED HOME COMBINES THE CONVENIENCE OF ALL THE NECESSARY ROOM FUNCTIONS ON A SINGLE FLOOR WITH THE DRAMATIC EXCEPTION OF THE TOWER LOFT. SEPARATED BY THE GENEROUSLY GLAZED ENTRY, THE SPACES ARE DIVIDED IN TWO NARROW WINGS FOR MAXIMUM DAYLIGHT AND VIEWS. THE "DAYTIME" WING IS A SINGLE GREAT VAULTED SPACE INCLUDING THE LIVING, DINING AND COOKING AREAS. THE OTHER "EVENING" WING CONTAINS THE SLEEPING, BATH AND LAUNDRY AREAS. A SPACIOUS DECK CONNECTS THE TWO WINGS AND SUPPORTS INDOOR / OUTDOOR LIVING WITH COVERED AND UNCOVERED SITTING AREAS AS WELL AS STEPS DOWN TO THE GROUNDS BEYOND. LONG BAY WINDOWS ARE ABUNDANT IN LIGHT AND REINFORCE THE CONNECTION TO THE OUTDOORS.

MAIN LEVEL	1620 SF
UPPER TOWER	228 SF
TOTAL HEATED SPACE	1848 SF

COVERED PORCH	135 SF
DECKS	330 SF

BEDROOMS	4
BATHROOMS	2

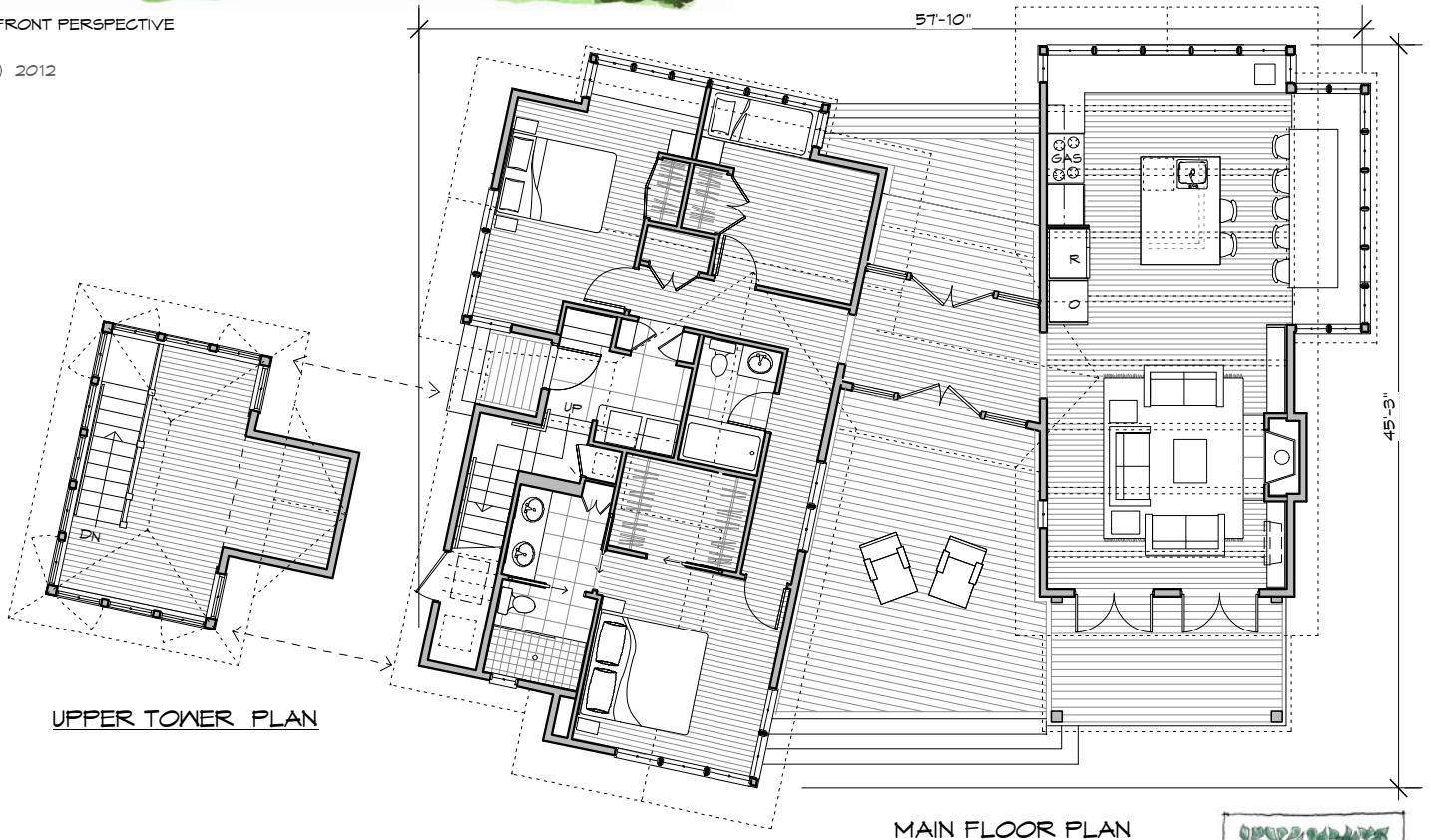
LIVING	14'-6" X 16'-0"
KITCHEN/DINING	19'-8" X 16'-4"
ENTRY	13'-0" X 7'-0"
COVERED PORCH	15'-0" X 8'-0"

M. BEDROOM	11'-6" X 12'-0"
M. BATH	6'-0" X 12'-0"
M. CLOSET	8'-0" X 5'-10"
BEDROOM 1	9'-0" X 9'-0"
BEDROOM 2	12'-9" X 8'-0"
UPPER TOWER	12'-6" X 12'-6"
BATH	5'-0" X 7'-10"



FRONT PERSPECTIVE

© 2012



UPPER TOWER PLAN

MAIN FLOOR PLAN

0 SCALE 9'

perfectlittlehouse.com

206 780 1016

