

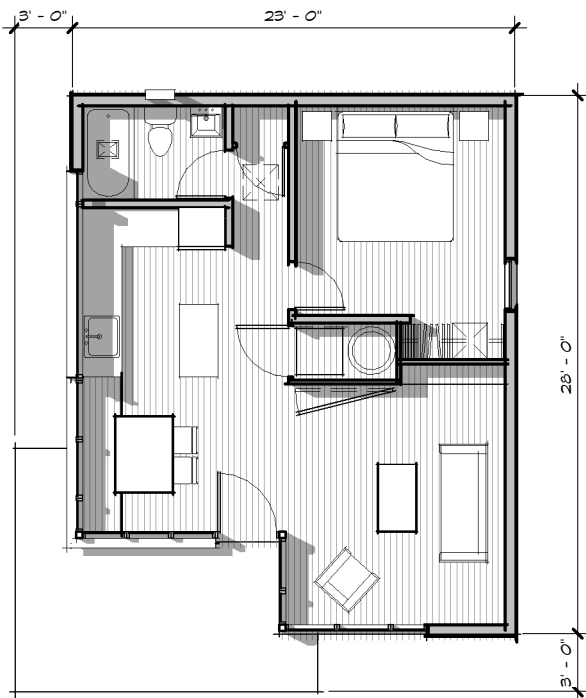
## THE PLUM I

THE PLUM I IS OUR SMALLEST SINGLE-STORY MODERN HOUSE. ITS COMPACT LAYOUT ALLOWS FOR AN ABUNDANCE OF NATURAL LIGHT THROUGH LARGE WINDOWS, AND THE SIMPLICITY OF ITS EXTERIOR FACADE IS MANIFESTED ON THE INTERIOR TO GIVE A MODERN FEELING.

DESPITE ITS MODEST SIZE, THE HOUSE LIVES LARGE WITH AN OPEN CONCEPT. THE MAIN FLOOR COMBINES MULTIPLE ACTIVITIES INCLUDING A FIRST LEVEL BEDROOM, A COVERED ENTRY PORCH, KITCHEN, LIVING AND DINING SPACES, A BATH AND STORAGE.

THOUGHTFUL DESIGN MAKES THE PLUM I AN EFFICIENT, COMPACT AND FUN PLACE IN WHICH TO RESIDE.

THE PLUM I IS ALSO A PERFECT LITTLE ACCESSORY DWELLING UNIT FOR YOUR SITE.



MAIN LEVEL	592 SF
COVERED PORCH	128 SF
BEDROOMS	1
BATHROOMS	1

LIVING	11'-5" x 12'-6"
DINING/ENTRY	7'-8" x 10'-6"
KITCHEN	10'-8" x 8'-11"
BEDROOM	10'-6" x 10'-6"
BATHROOM	4'-10" x 7'-4"

### FLOOR PLAN

