

THE PLUM V

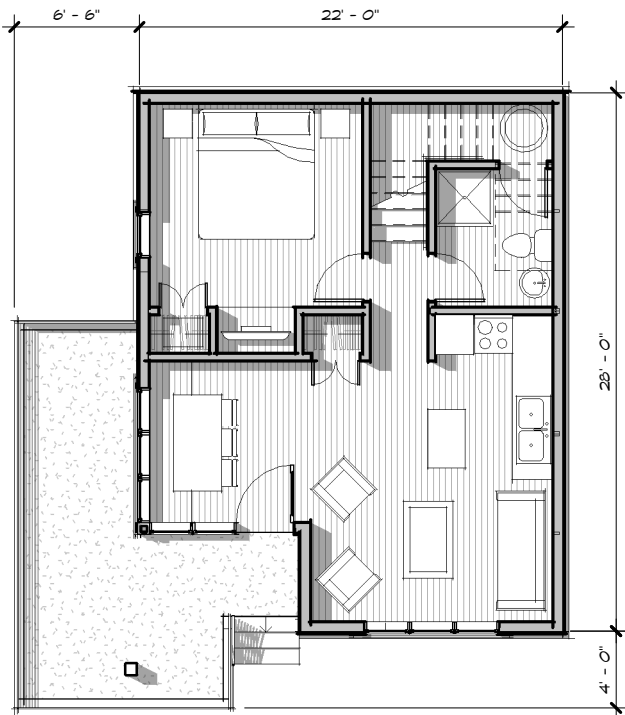


THE PLUM V IS A MORE TRADITIONAL GLADDING OF OUR COMPACT PLUMS II + IV. INSTEAD OF THE MODERN MASSING AND WINDOW SIZES OF THE PREVIOUS DESIGNS, THE PLUM V HAS A HIP ROOF, HORIZONTAL SIDING AND SCHOOLHOUSE STYLE WINDOWS.

DESPITE ITS MODEST SIZE, THIS TWO-BEDROOM COTTAGE CAN BE A GREAT STARTER HOUSE OR RENTAL. THE MORE TRADITIONAL SIDING AND ROOF LINE MAY BE MORE INVITING IN AN ESTABLISHED NEIGHBORHOOD INFILL LOCATION AS WELL.

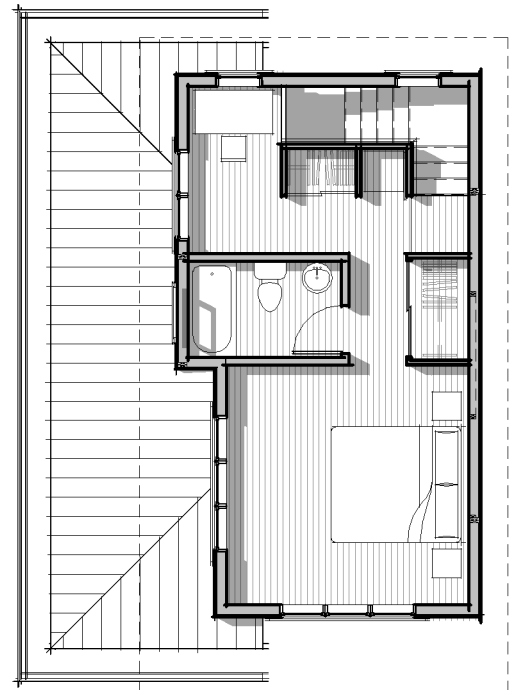
THIS SMALL HOUSE HAS A SIMPLE MASSING THAT WILL HELP PROVIDE EASE OF CONSTRUCTION FOR YOUNG BUDGETS. STILL, WITH THE GREAT COVERED DECK AREA THIS COMPACT COTTAGE CAN FEEL LARGER BY EXTENDING THE LIVING SPACE OUTSIDE.

MAIN LEVEL	582 SF
UPPER LEVEL	420 SF
	<hr/> 1,002 SF
COVERED PORCH	171 SF
BEDROOMS	2
BATHROOMS	1 1/2



LIVING 12'-10" x 8'-0"
 DINING/ENTRY 8'-6" x 8'-6"
 KITCHEN 6'-0" x 8'-8"
 BEDROOM 11'-0" x 10'-8"
 BATHROOM 6'-0" x 7'-2"

M. BEDROOM 12'-10" x 12'-6"
 M BATH 8'-0" x 5'-0"
 DECK 10'-0" x 17'-0"



UPPER FLOOR PLAN

LOWER FLOOR PLAN

