

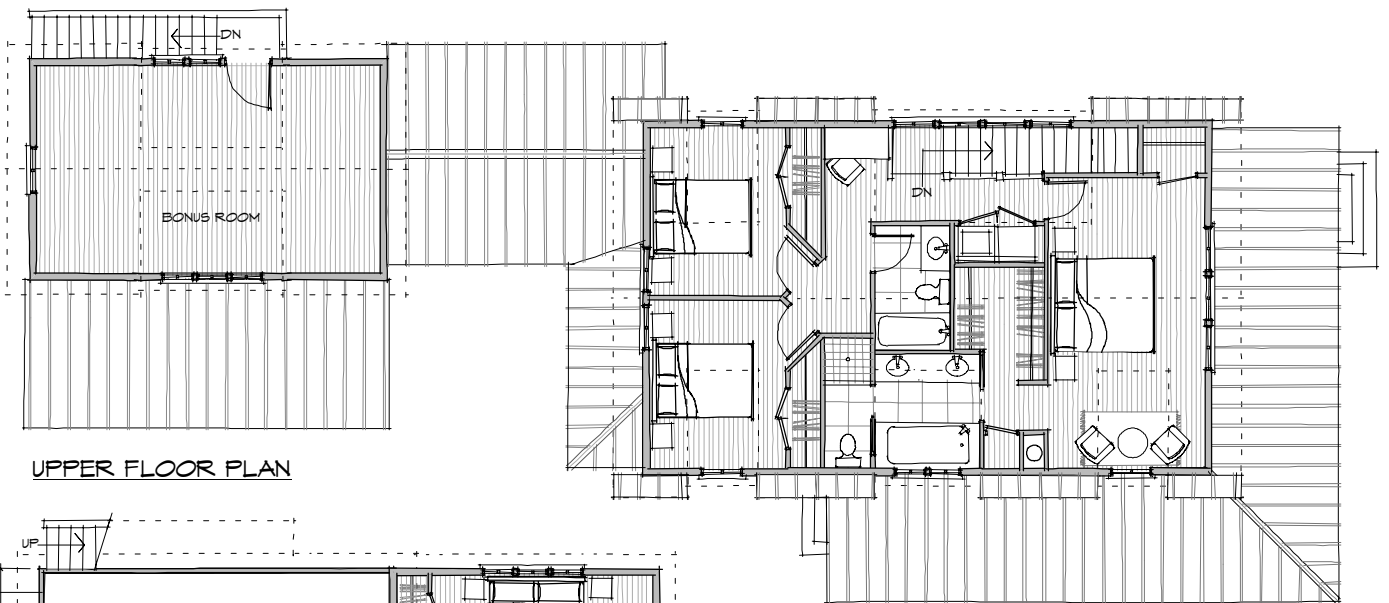


THE WHITEHALL

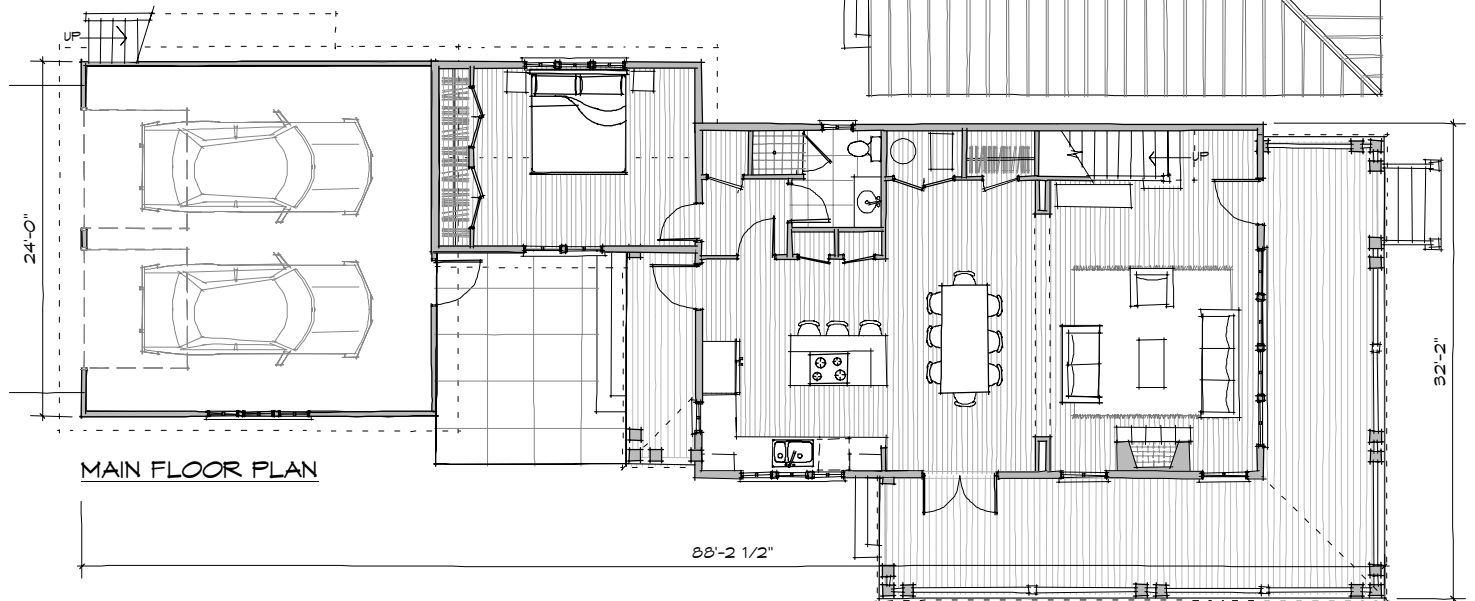
FINE COUNTRY LIVING IN A FOUR BEDROOM HOUSE PERFECTLY DESIGNED FOR LARGE FAMILY GATHERINGS. THE GREAT ROOM EXTENDS TO THE WRAP-AROUND PORCH TO DOUBLE YOUR LIVABLE SPACE. THE DOWNSTAIRS BEDROOM IS PERFECT FOR GUESTS OR VISITING IN-LAWS. SEND THE TEENAGERS TO THE BONUS ROOM ABOVE THE GARAGE, OR SAVE IT FOR YOUR PRIVATE OFFICE.

MAIN LEVEL	1156 SF
UPPER LEVEL	878 SF
BONUS ROOM	362 SF
COVERED PORCH	538 SF
GARAGE	576 SF
BEDROOMS	4
BATHROOMS	3

© 2009



UPPER FLOOR PLAN



MAIN FLOOR PLAN

LIVING ROOM	14'-0" X 19'-8"	MASTER CLOSET	6'-0" X 7'-8"
DINING AREA	10'-0" X 19'-8"	MASTER BATH	10'-5" X 7'-10"
KITCHEN	12'-1" X 14'-4"	UPPER BEDROOM 1	11'-8" X 11'-4"
LOWER BEDROOM	17'-4" X 12'-0"	UPPER BEDROOM 2	11'-8" X 11'-4"
GARAGE	23'-6" X 23'-6"	BATH	5'-0" X 8'-6"
MASTER BEDROOM	10'-8" X 19'-8"	BONUS ROOM	23'-6" X 14'-0"



!"
!

!

○"\$\$%

&()*+,-./01'*/2

'\$ \$ \$