



© 2011

THE HAMILTON

THE HAMILTON WORKS WELL AS A SINGLE COTTAGE ON A PROPERTY NEAR A LAKE OR FIELD OR AS PART OF A COLLECTION OF SIMILARLY DESIGNED HOUSES INTENDED TO FIT IN AS A MEMBER OF A NEIGHBORHOOD COLLECTION. THE MODEST DIMENSIONS OF THIS TWO BEDROOM, TWO AND ONE HALF BATHROOM HOUSE ALLOW AMPLE NATURAL LIGHT TO ENTER THE SPACES. THIS BALANCE OF NATURAL LIGHT GIVES THE HAMILTON A PLEASANT, COMFORTABLE FEELING.

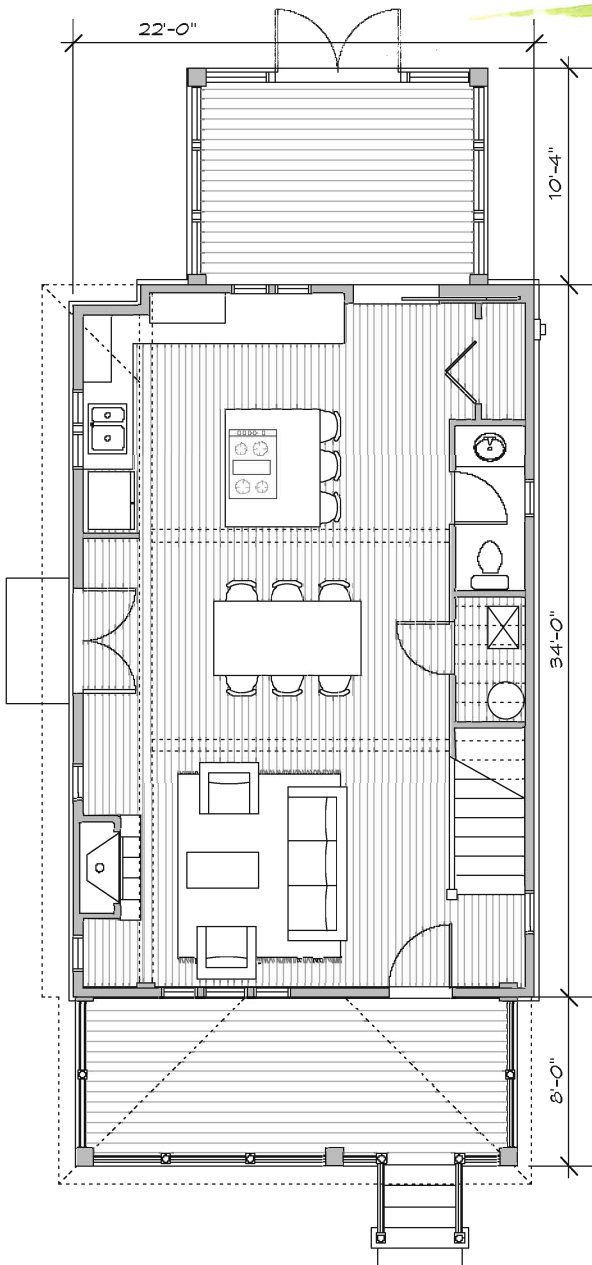
IN SPITE OF THE MODEST SIZE, THE HOUSE LIVES LARGE. THE MAIN FLOOR AFFORDS MULTIPLE ACTIVITIES WITHIN ONE MAIN SPACE. COVERED PORCHES ON BOTH ENDS OFFER FLEXIBILITY FOR ENJOYING BOTH THE YARDS AND VISTAS FROM BOTH ENDS OF THE HOUSE.

SUSTAINABLE MATERIALS AND THOUGHTFUL INSULATION SPECIFICATIONS MAKE THE HAMILTON AN EFFICIENT, ENJOYABLE AND FUN PLACE IN WHICH TO RESIDE.

MAIN LEVEL 886 SF
UPPER LEVEL 639 SF

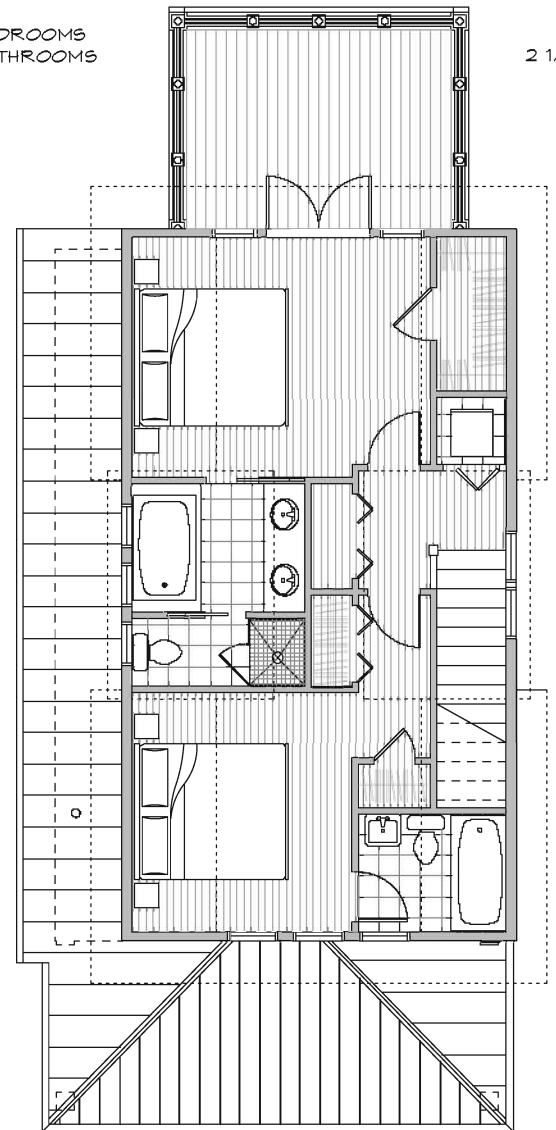
COVERED PORCH 170 SF
DECK 151 SF

BEDROOMS 2
BATHROOMS 2 1/2



LOWER FLOOR PLAN

0 SCALE 9



UPPER FLOOR PLAN

LIVING 17'-4" X 11'-8"
DINING 17'-4" X 9'-5"
KITCHEN 17'-4" X 11'-8"

M. BEDROOM 14'-2" X 11'-4"
M. BATH 8'-3" X 9'-8"
BEDROOM 10'-5" X 11'-4"
BATH 7'-0" X 5'-6"
DECK 12'-10" X 9'-7"



THE HAMILTON

THE HAMILTON WORKS WELL AS A SINGLE COTTAGE ON A PROPERTY NEAR A LAKE OR FIELD OR AS PART OF A COLLECTION OF SIMILARLY DESIGNED HOUSES INTENDED TO FIT IN AS A MEMBER OF A NEIGHBORHOOD COLLECTION. THE MODEST DIMENSIONS OF THIS TWO BEDROOM, TWO AND ONE HALF BATHROOM HOUSE ALLOW AMPLE NATURAL LIGHT TO ENTER THE SPACES. THIS BALANCE OF NATURAL LIGHT GIVES THE HAMILTON A PLEASANT, COMFORTABLE FEELING.

IN SPITE OF THE MODEST SIZE, THE HOUSE LIVES LARGE. THE MAIN FLOOR AFFORDS MULTIPLE ACTIVITIES WITHIN ONE MAIN SPACE. COVERED PORCHES ON BOTH ENDS OFFER FLEXIBILITY FOR ENJOYING BOTH THE YARDS AND VISTAS FROM BOTH ENDS OF THE HOUSE.

SUSTAINABLE MATERIALS AND THOUGHTFUL INSULATION SPECIFICATIONS MAKE THE HAMILTON AN EFFICIENT, ENJOYABLE AND FUN PLACE IN WHICH TO RESIDE.

MAIN LEVEL	886 SF
UPPER LEVEL	639 SF
COVERED PORCH	170 SF
DECK	151 SF
BEDROOMS	2
BATHROOMS	2 1/2

