



© 2009

THE HARBORVIEW

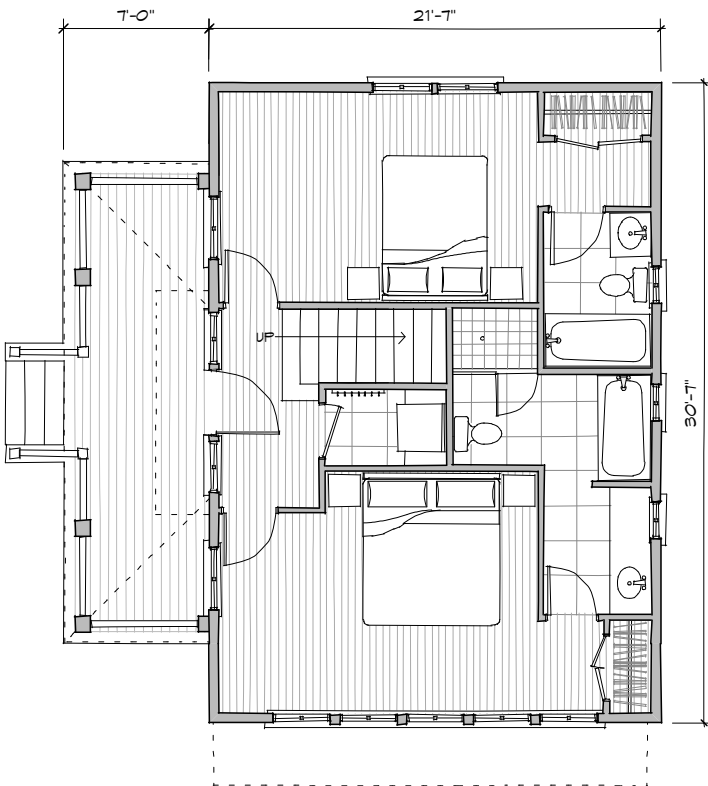
TAKE COMMAND OF YOUR VIEW FROM THE UPPER LEVEL OF THIS PERFECTLY COMPACT COTTAGE. GENEROUS DOWN-STAIRS BEDROOMS ALLOW THE LIVING SPACES TO REACH OUT TO THE VISTA. THE UPSTAIRS DECK EXTENDS YOUR GATHERING AREA OUTSIDE. NOTHING BUT A LOW WALL BETWEEN THE KITCHEN AND STAIRS PRESERVES YOUR CONNECTION TO THE LIVING SPACE.

MAIN LEVEL	660 SF
UPPER LEVEL	557 SF
COVERED PORCH	180 SF
COVERED DECK	136 SF

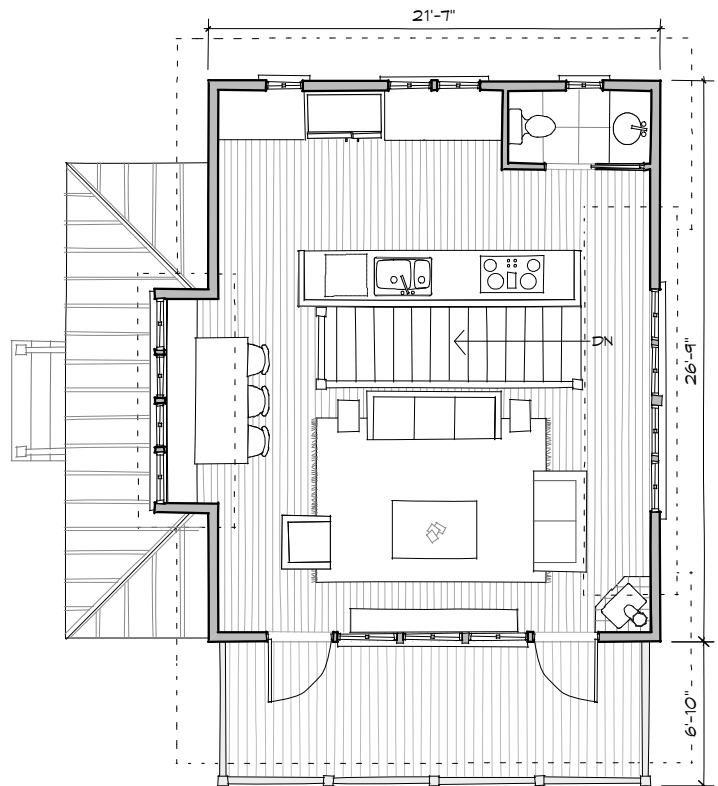
BEDROOMS	2
BATHROOMS	2 1/2

LIVING ROOM	17'-6" X 11'-6"
DINING AREA	7'-0" X 10'-6"
KITCHEN	13'-6" X 10'-0"

MASTER BEDROOM	20'-8" X 11'-6"
MASTER BATH	9'-6" X 11'-6"
BEDROOM 2	20'-8" X 10'-0"
BATH 2	5'-0" X 7'-6"



MAIN FLOOR PLAN



UPPER FLOOR PLAN



THE HARBORVIEW

TAKE COMMAND OF YOUR VIEW FROM THE UPPER LEVEL OF THIS PERFECTLY COMPACT COTTAGE. GENEROUS DOWNSTAIRS BEDROOMS ALLOW THE LIVING SPACES TO REACH OUT TO THE VISTA. THE UPSTAIRS DECK EXTENDS YOUR GATHERING AREA OUTSIDE. NOTHING BUT A LOW WALL BETWEEN THE KITCHEN AND STAIRS PRESERVES YOUR CONNECTION TO THE LIVING SPACE.

MAIN LEVEL	660 SF
UPPER LEVEL	557 SF
COVERED PORCH	180 SF
COVERED DECK	136 SF
BEDROOMS	2
BATHROOMS	2 1/2

