



© 2013

## THE HAWTHORN

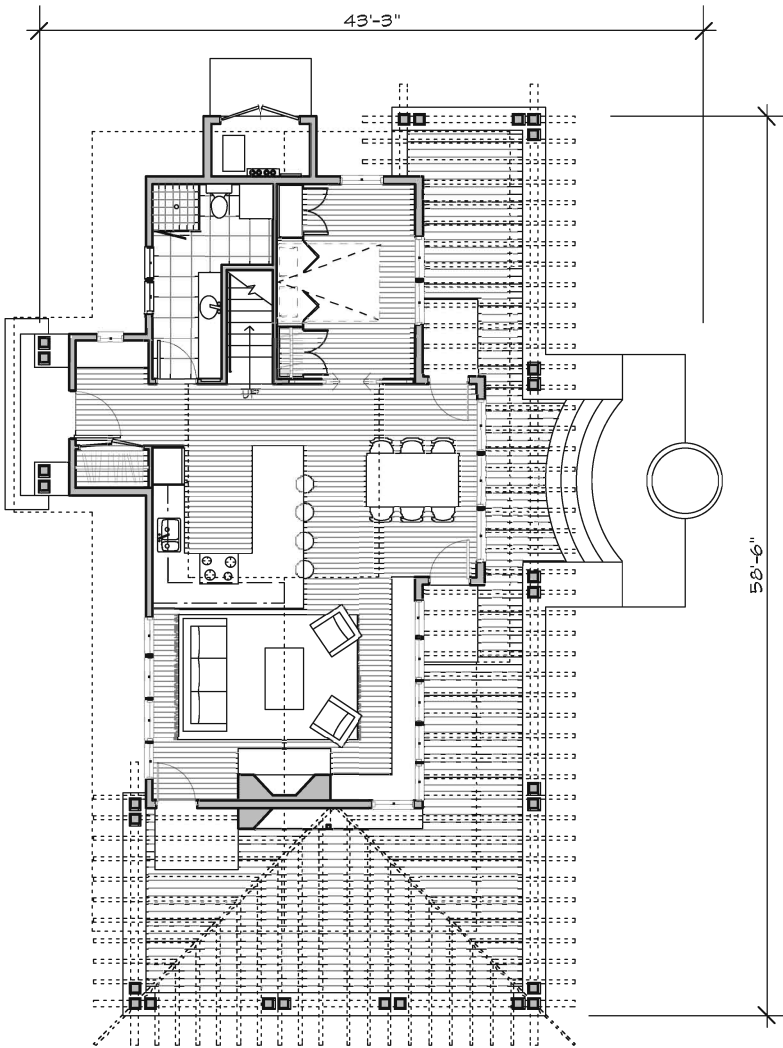
THIS SMALL HOUSE PLAN LIVES BIG ON THE FIRST FLOOR WITH AN OPEN LAYOUT FOCUSED TOWARD A GRAND VIEW AND A FIRE PIT AT THE BOTTOM OF STAIRS REMINISCENT OF THEATER SEATING. THE LARGE DECK WRAPS AND EXTENDS AROUND THE HOUSE PROVIDING A COVERED OUTDOOR AREA ALMOST AS LARGE AS THE GREAT ROOM. ON THE SECOND FLOOR A VERY PRIVATE, SMALL CABIN LIKE BEDROOM LEAVES THE CROWDS BEHIND. THE HAWTHORN IS A PERFECT LITTLE HOUSE PLAN FOR A VACATION HOME.

MAIN LEVEL 875 SF  
UPPER LEVEL 242 SF

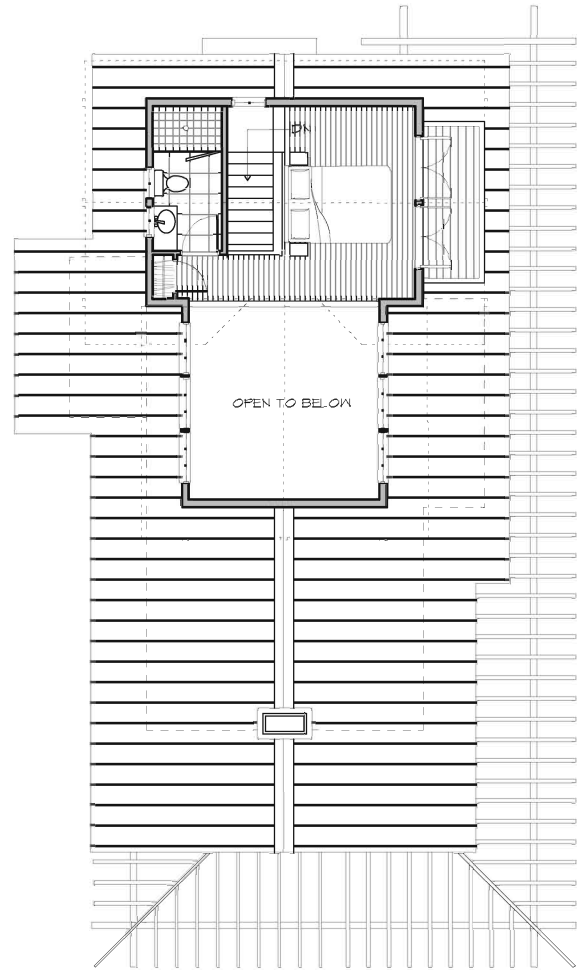
DECK 685 SF

BEDROOMS 2  
BATHROOMS 2

LIVING 17'-0" X 12'-6"  
DINING 10'-0" X 12'-6"  
KITCHEN 11'-6" X 10'-6"  
BEDROOM 9'-0" X 12'-8"  
BATH 7'-9" X 12'-8"  
UPR. BEDROOM 8'-6" X 12'-6"  
UPR. BATH 4'-6" X 9'-4"  
DECK 4'-0" X 10'-4"



LOWER FLOOR PLAN



UPPER FLOOR PLAN

0 SCALE 9

perfectlittlehouse.com

206 780 1016



## THE HANTHORN

THIS SMALL HOUSE PLAN LIVES BIG ON THE FIRST FLOOR WITH AN OPEN LAYOUT FOCUSED TOWARD A GRAND VIEW AND A FIRE PIT AT THE BOTTOM OF STAIRS REMINISCENT OF THEATER SEATING. THE LARGE DECK WRAPS AND EXTENDS AROUND THE HOUSE PROVIDING A COVERED OUTDOOR AREA ALMOST AS LARGE AS THE GREAT ROOM. ON THE SECOND FLOOR A VERY PRIVATE, SMALL CABIN LIKE BEDROOM LEAVES THE CROWDS BEHIND. THE HANTHORN IS A PERFECT LITTLE HOUSE PLAN FOR A VACATION HOME.

MAIN LEVEL	875 SF
UPPER LEVEL	242 SF
DECK	685 SF
BEDROOMS	2
BATHROOMS	2



© 2013

BACK VIEW

