



THE LARCH

The Larch is a full size house designed for a family who values coming together and sharing their lives in a generous, light filled space. The Larch is perfect for a view or waterfront property. The house includes distinct daytime and nighttime wings. The entry "glassket" conjoins the two wings and provides transparency to a view beyond from the moment of arrival. The nighttime wing is complete with a main level primary suite, and utility space. The upper floor includes two ensuite bedrooms, and a generous open study or den space adjacent to the floating stair system. The daytime spaces include an ample great room with covered outdoor area, pantry and home office space.

The character of the building is a contextual mix of architectural forms coupled with modern window, door and detail arrangements



FRONT VIEW

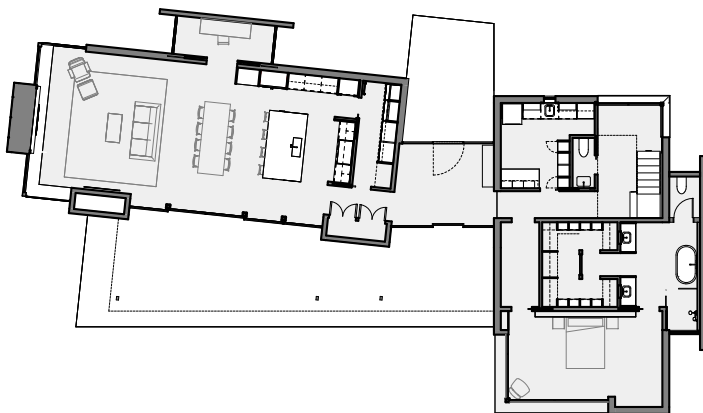
MAIN LEVEL	2,174 SF
UPPER LEVEL	666 SF
TOTAL SF	2,840 SF

COVERED ENTRY	87 SF
COVERED PORCH	549 SF
BEDROOMS	3
BATHROOMS	3 1/2

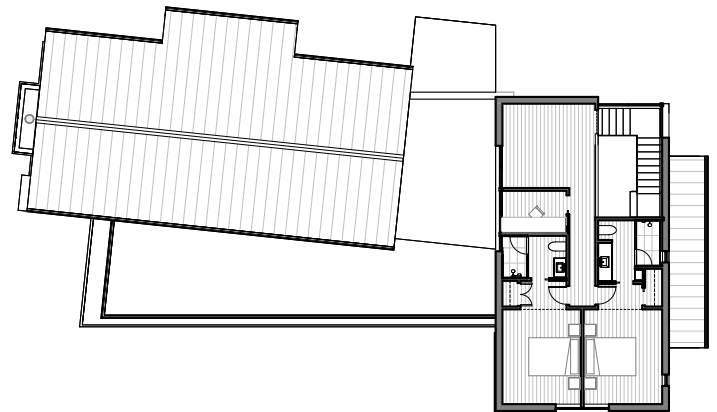
LIVING ROOM	18'-7" X 19'-4"
DINING AREA	10'-0" X 19'-4"
KITCHEN	18'-9" X 19'-4"

PRIMARY BEDROOM	20'-3" X 10'-10"
PRIMARY CLOSET	11'-0" X 9'-9"
PRIMARY BATH	10'-2" X 14'-0"

BEDROOM 2	16'-3" X 10'-4"
BEDROOM 3	15'-9" X 10'-4"
BATH 2	8'-5" X 5'-8"
BATH 3	8'-2" X 8'-0"



ENTRY LEVEL



UPPER LEVEL



THE LARCH

The Larch is a full size house designed for a family who values coming together and sharing their lives in a generous, light filled space. The Larch is perfect for a view or waterfront property. The house includes distinct daytime and nighttime wings. The entry "glassket" conjoins the two wings and provides transparency to a view beyond from the moment of arrival. The nighttime wing is complete with a main level primary suite, and utility space. The upper floor includes two ensuite bedrooms, and a generous open study or den space adjacent to the floating stair system. The daytime spaces include an ample great room with covered outdoor area, pantry and home office space.

MAIN LEVEL	2,174 SF
UPPER LEVEL	666 SF
TOTAL SF	2,840 SF

COVERED ENTRY	87 SF
COVERED PORCH	549 SF
BEDROOMS	3
BATHROOMS	3 1/2



BACK VIEW

