

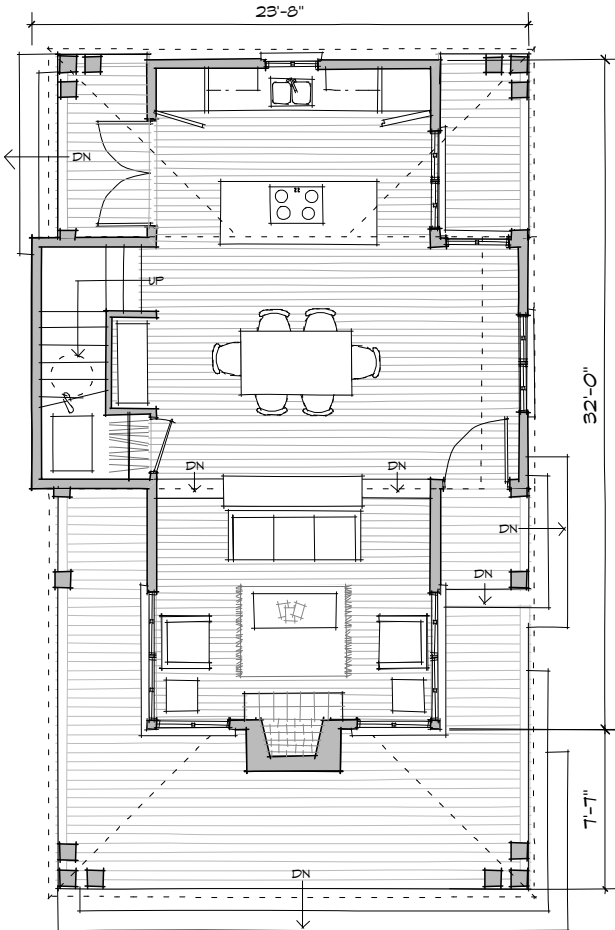


© 2009

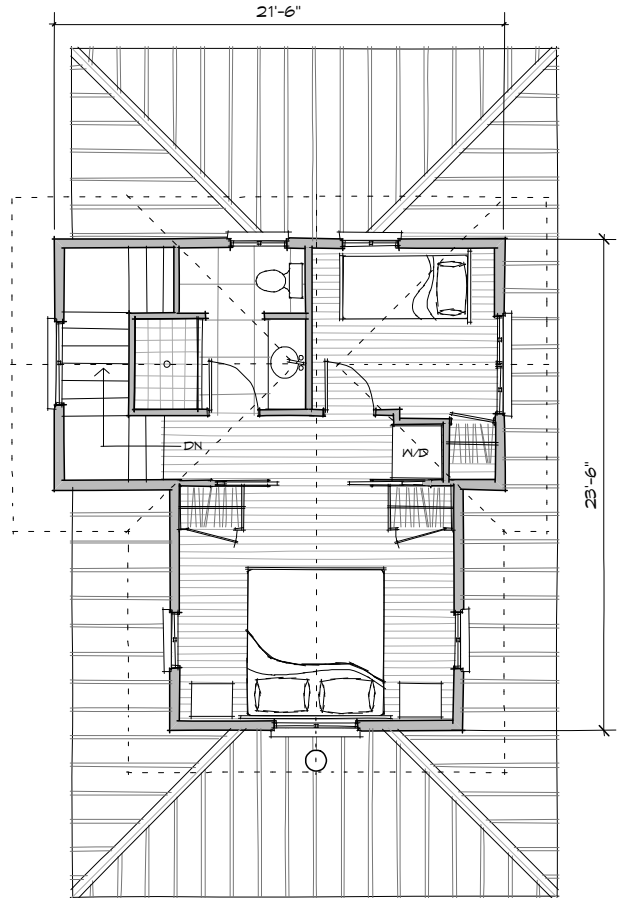
# THE MADRONA

THE MADRONA OFFERS THE GREAT ROOM DESIGN WITH A MORE FORMAL, STEP-DOWN LIVING ROOM AND FIREPLACE. THE ENTRY NOOK EXPANDS THE FEEL OF THE DINING AREA AND THE LARGE KITCHEN ISLAND IS PERFECT FOR OVERSEEING YOUR FAMILY GATHERING. UPSTAIRS, A SMALL GUEST ROOM OR OFFICE COMPLIMENTS THE LARGE BEDROOM.

MAIN LEVEL	560 SF
UPPER LEVEL	350 SF
COVERED PORCH	305 SF
BEDROOMS	2
BATHROOMS	1
LIVING ROOM	13'-2" X 10'-8"
DINING AREA	17'-3" X 11'-2"
KITCHEN	13'-0" X 8'-6"
MASTER BEDROOM	13'-1" X 11'-6"
BATH	7'-8" X 6'-0"
BEDROOM 2	8'-10" X 8'-2"



MAIN FLOOR PLAN



UPPER FLOOR PLAN



# THE MADRONA

THE MADRONA OFFERS THE GREAT ROOM DESIGN WITH A MORE FORMAL, STEP-DOWN LIVING ROOM AND FIREPLACE. THE ENTRY NOOK EXPANDS THE FEEL OF THE DINING AREA AND THE LARGE KITCHEN ISLAND IS PERFECT FOR OVERSEEING YOUR FAMILY GATHERING. UPSTAIRS, A SMALL GUEST ROOM OR OFFICE COMPLIMENTS THE LARGE BEDROOM.

MAIN LEVEL	560 SF
UPPER LEVEL	350 SF
COVERED PORCH	305 SF
BEDROOMS	2
BATHROOMS	1



BACK VIEW

