

THE PLUM III

THE PLUM III IS THE LARGEST OF OUR MODERN PLUM SERIES, WITH THREE BEDROOMS UPSTAIRS AND A COMPACT LIVING/DINING/KITCHEN GREAT ROOM ON THE FIRST FLOOR.

SIMPLE MASSING AND LARGE WINDOWS ACCENTUATE THE MODERN LINES OF THE EXTERIOR AND ALLOWS FOR GENEROUS NATURAL LIGHT THROUGHOUT THE HOUSE.

IN SPITE OF ITS MODEST SIZE, THE HOUSE LIVES LARGE WITH MULTIPLE AREAS FOR STORAGE LOCATED ON THE FIRST FLOOR AND OUTDOOR MECHANICAL ACCESS.

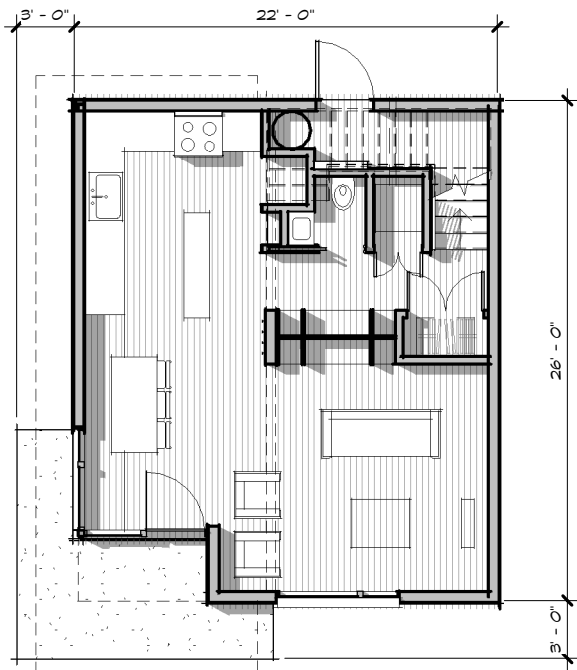
THOUGHTFUL DESIGN MAKES THE PLUM III AN EFFICIENT AND FUN SPACE FOR A NEW FAMILY HOME.



MAIN LEVEL	560 SF
UPPER LEVEL	560 SF
	<hr/> 1,120 SF

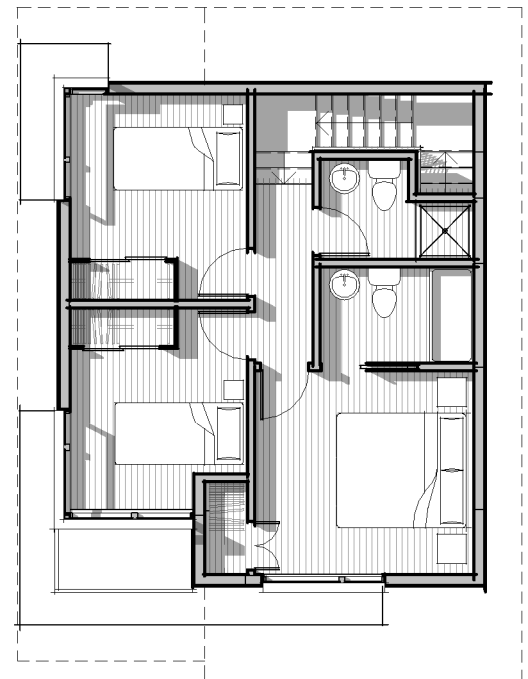
COVERED PORCH 88 SF

BEDROOMS 3
BATHROOMS 2 1/2



LIVING 14'-0" x 11'-10"
DINING/ENTRY 7'-0" x 11'-2"
KITCHEN 9'-2" x 10'-6"

M. BEDROOM 11'-4" x 10'-7"
M BATH 8'-0" x 5'-0"
BEDROOM #2 9'-3" x 10'-6"
BATHROOM 8'-0" x 5'-0"
BEDROOM #3 9'-3" x 10'-8"



LOWER FLOOR PLAN

UPPER FLOOR PLAN

