

THE PLUM IV

SIMILAR TO THE PLUM II BUT INSTEAD OF A SLOPED SHED ROOF, THE PLUM IV INCORPORATES A FLAT ROOF AND AN INCREASED NUMBER OF WINDOWS.

THE PLUM IV WORKS WELL AS A SMALL, TWO-STORY MODERN INFILL NEIGHBORHOOD HOUSE. THE COMPACT LAYOUT ALLOWS FOR AN ABUNDANCE OF NATURAL LIGHT ON BOTH FLOORS AND HIGHLIGHTS THE MODERN FEEL OF THE STRUCTURE.

DESPITE ITS MODEST SIZE, THIS TWO-BEDROOM COTTAGE CAN BE A GREAT STARTER HOUSE OR RENTAL. THE COVERED LOWER LEVEL DECK ALLOWS THE LIVING SPACE OF THE SMALL HOUSE TO SPILL OUTSIDE.

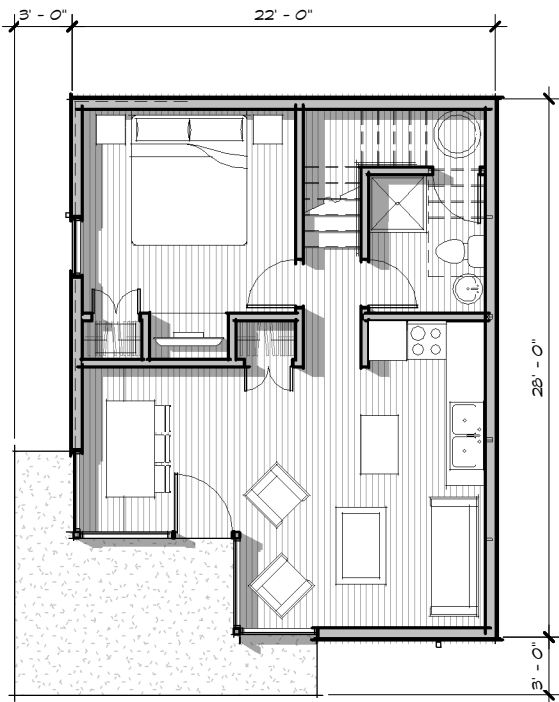
UPSTAIRS, THE LARGE DECK PROVIDES OPPORTUNITIES FOR OUTDOOR LIVING AND ENJOYMENT OF VISTAS BEYOND—PERFECT FOR A SECOND HOME AT A VACATION LOCATION.



MAIN LEVEL	582 SF
UPPER LEVEL	420 SF
	<hr/> 1,002 SF

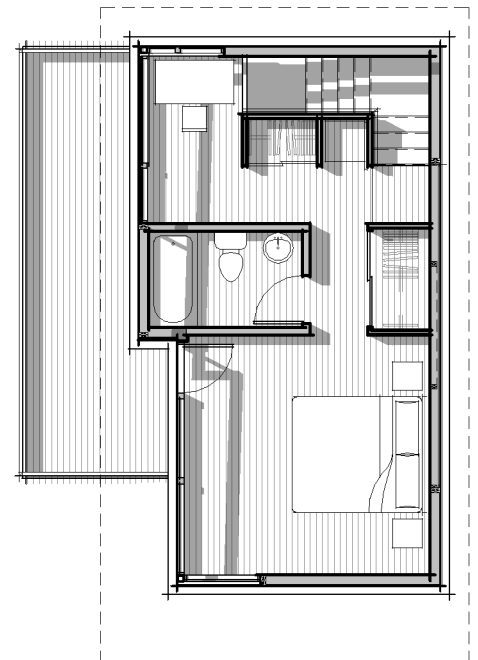
COVERED PORCH	118 SF
UPPER DECK	160 SF

BEDROOMS	2
BATHROOMS	1 1/2



LIVING	12'-10" x 8'-0"
DINING/ENTRY	8'-6" x 8'-6"
KITCHEN	6'-0" x 8'-8"
BEDROOM	11'-0" x 10'-8"
BATHROOM	6'-0" x 7'-2"

M. BEDROOM	12'-10" x 12'-6"
M BATH	8'-0" x 5'-0"
DECK	6'-0" x 22'-7"



LOWER FLOOR PLAN

UPPER FLOOR PLAN

