

# THE CHERRY THREE



THE CHERRY THREE IS A VARIATION ON THE ALDER COTTAGES. THE CHERRY THREE IS COMPRISED OF A MAIN BUILDING WITH A GABLE FORM PRESENTED TO THE FRONT AND REAR YARDS. THE HOUSE ALSO INCLUDES A MASTER BEDROOM WING LOCATED ON THE MAIN FLOOR SEPARATED BY A SHORT LIBRARY OR UTILITY "LINK". THE OUTDOOR SPACE CREATED BY THE "LINK" PROVIDES UNIQUE OPPORTUNITIES FOR COURTYARDS WHICH ARE MORE PRIVATE THAN THE FRONT PORCH. THE ANGLE OF THE WING MAY BE SPLOYED TO ACCOMMODATE THE BEST SOLAR EXPOSURE OR TO SHIELD FROM UNPLEASANT WINDS. THE UPPER FLOOR REMAINS THE SAME AS THE ALDER COTTAGES.

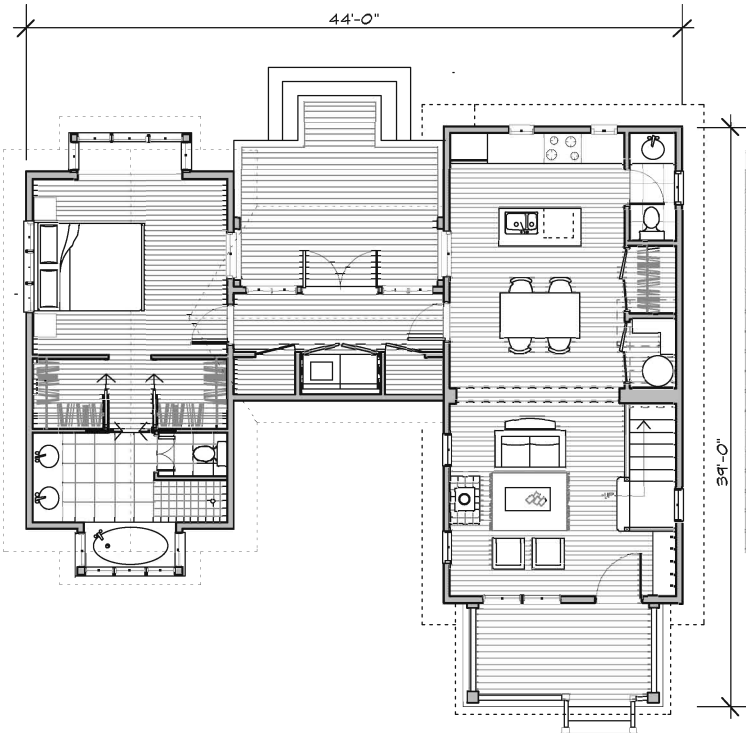
MAIN LEVEL 486 + 512 = 998 SF  
 UPPER LEVEL 465 SF  
 1,463 SF

COVERED PORCH 94 SF  
 DECK 210 SF

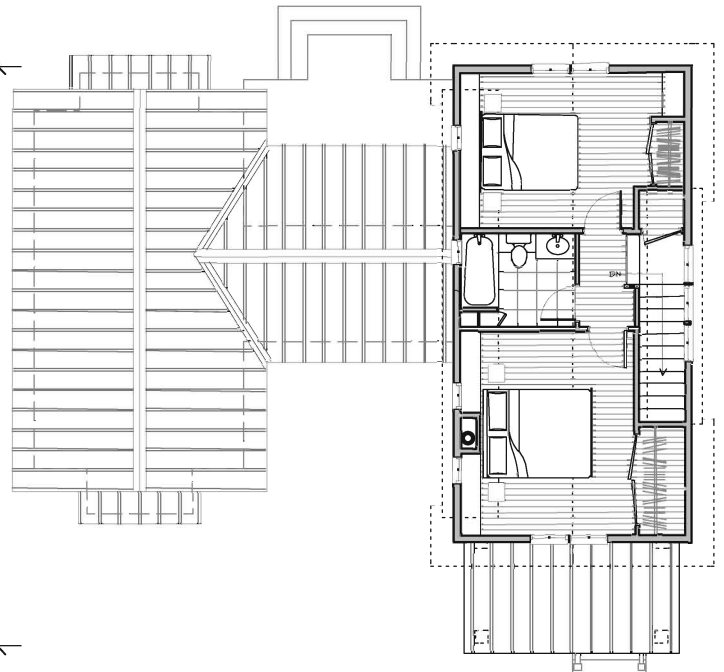
BEDROOMS 3  
 BATH ROOM 11'-8" X 14'-0"  
 LIVING ROOM 11'-8" X 9'-6"  
 DINING AREA 11'-8" X 8'-0"  
 KITCHEN 11'-8" X 8'-0"

BEDROOM 1 11'-8" X 13'-8"  
 BATH 7'-8" X 8'-6"  
 BEDROOM 2 11'-8" X 10'-6"

M. BEDROOM 13'-0" X 11'-6"  
 M. BATH 13'-0" X 9'-0"  
 CLOSET HALL 13'-0" X 7'-0"



MAIN FLOOR PLAN



UPPER FLOOR PLAN

